

# Databases, Tables & Calculators by Subject

FONT SIZE:

Change Output Options:

From:

To:



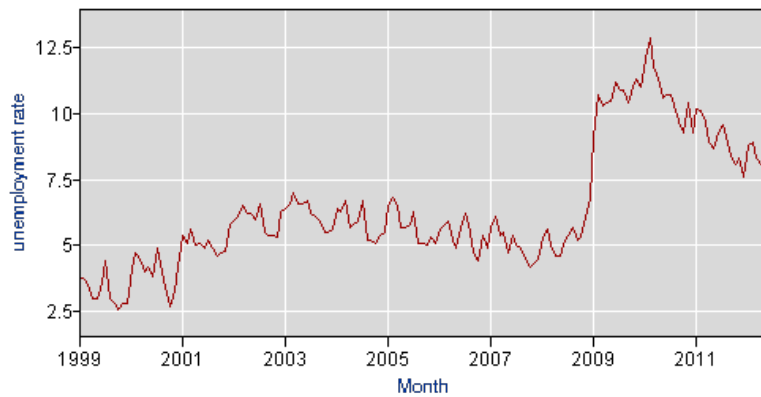
include graphs

[More Formatting Options](#)

Data extracted on: August 16, 2012 (4:38:37 PM)

## Local Area Unemployment Statistics

**Series Id:** LAUCN55059003  
 Not Seasonally Adjusted  
**Area:** Kenosha County, WI  
**Area Type:** Counties and equivalents  
**State/Region/Division:** Wisconsin  
**Measure:** unemployment rate

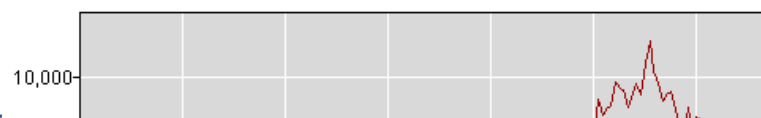


Download: .xls

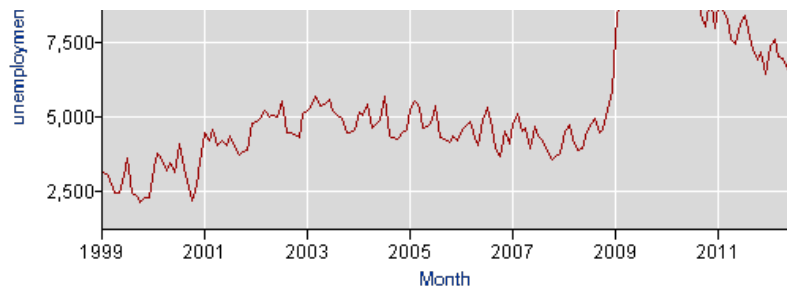
Year	Jan	Feb	Mar	Apr	May	Jun	Jul	Aug	Sep	Oct	Nov	Dec	Annual
1999	3.8	3.7	3.5	3.0	3.0	3.6	4.4	3.0	2.8	2.6	2.8	2.8	3.3
2000	4.1	4.7	4.5	4.0	4.2	3.8	4.9	4.0	3.4	2.7	3.3	4.2	4.0
2001	5.4	5.1	5.6	5.0	5.1	4.9	5.2	4.9	4.6	4.7	4.8	5.8	5.1
2002	6.0	6.1	6.5	6.2	6.2	6.0	6.6	5.5	5.4	5.4	5.3	6.3	6.0
2003	6.4	6.6	7.0	6.6	6.6	6.7	6.2	6.1	5.9	5.5	5.5	5.6	6.2
2004	6.4	6.3	6.7	5.7	5.8	5.9	6.7	5.2	5.2	5.1	5.4	5.5	5.8
2005	6.5	6.8	6.5	5.7	5.7	5.8	6.3	5.1	5.1	5.0	5.3	5.1	5.7
2006	5.6	5.8	5.9	5.2	4.9	5.7	6.2	5.5	4.7	4.4	5.4	4.9	5.4
2007	5.7(H)	6.1(H)	5.4(H)	5.5(H)	4.7(H)	5.4(H)	5.0(H)	4.9(H)	4.5(H)	4.2(H)	4.3(H)	4.5(H)	5.0(H)
2008	5.3(H)	5.6(H)	5.0(H)	4.6(H)	4.6(H)	5.1(H)	5.4(H)	5.7(H)	5.2(H)	5.3(H)	6.1(H)	6.8(H)	5.4(H)
2009	9.1(H)	10.7(H)	10.3(H)	10.4(H)	10.5(H)	11.2(H)	10.9(H)	10.9(H)	10.4(H)	11.0(H)	11.3(H)	11.0(H)	10.6(H)
2010	12.1(E)	12.9(E)	11.8(E)	11.3(E)	10.6(E)	10.7(E)	10.7(E)	10.1(E)	9.5(E)	9.3(E)	10.4(E)	9.3(E)	10.7(E)
2011	10.2(E)	10.1(E)	9.7(E)	8.9(E)	8.7(E)	9.3(E)	9.6(E)	9.1(E)	8.4(E)	8.1(E)	8.3(E)	7.6(E)	9.0(E)
2012	8.8	8.9	8.3	8.1	7.7	8.6(P)							

H : Reflects controlling to new statewide totals.  
 E : Reflects revised inputs, reestimation, and controlling to new statewide totals.  
 P : Preliminary.

**Series Id:** LAUCN55059004  
 Not Seasonally Adjusted  
**Area:** Kenosha County, WI  
**Area Type:** Counties and equivalents  
**State/Region/Division:** Wisconsin  
**Measure:** unemployment



Bureau of Labor Statistics Data

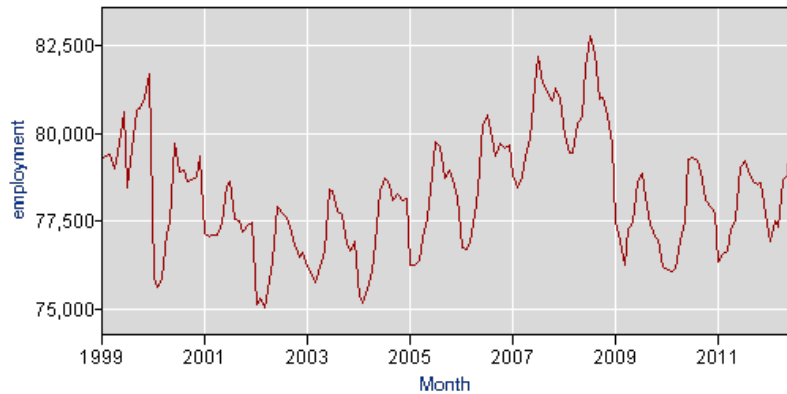


Download: .xls

Year	Jan	Feb	Mar	Apr	May	Jun	Jul	Aug	Sep	Oct	Nov	Dec	Annual
1999	3121	3084	2893	2466	2463	3011	3626	2471	2354	2153	2310	2312	2689
2000	3273	3758	3541	3174	3428	3156	4066	3281	2804	2185	2715	3509	3241
2001	4445	4180	4565	4020	4177	4049	4326	3963	3699	3846	3895	4793	4163
2002	4807	4921	5210	4977	5058	5003	5505	4483	4440	4427	4283	5118	4853
2003	5195	5389	5696	5344	5418	5595	5184	5056	4908	4456	4438	4551	5103
2004	5171	5063	5414	4634	4746	4893	5660	4349	4307	4227	4482	4580	4794
2005	5260	5541	5310	4636	4679	4879	5365	4287	4254	4117	4368	4182	4740
2006	4583	4746	4847	4303	4026	4890	5293	4641	3927	3669	4535	4069	4461
2007	4762(H)	5071(H)	4518(H)	4594(H)	3953(H)	4657(H)	4350(H)	4213(H)	3834(H)	3544(H)	3644(H)	3793(H)	4244(H)
2008	4486(H)	4727(H)	4225(H)	3865(H)	3914(H)	4357(H)	4740(H)	4948(H)	4454(H)	4551(H)	5232(H)	5843(H)	4612(H)
2009	7734(H)	9255(H)	8741(H)	8934(H)	9078(H)	9873(H)	9632(H)	9589(H)	9000(H)	9508(H)	9814(H)	9415(H)	9214(H)
2010	10495(E)	11260(E)	10218(E)	9824(E)	9230(E)	9449(E)	9552(E)	8940(E)	8227(E)	8006(E)	8999(E)	7926(E)	9344(E)
2011	8712(E)	8609(E)	8200(E)	7588(E)	7403(E)	8132(E)	8398(E)	7877(E)	7198(E)	6904(E)	7154(E)	6417(E)	7716(E)
2012	7386	7598	7022	6948	6572	7528(P)							

H : Reflects controlling to new statewide totals.  
 E : Reflects revised inputs, reestimation, and controlling to new statewide totals.  
 P : Preliminary.

Series Id: LAUCN55059005  
 Not Seasonally Adjusted  
 Area: Kenosha County, WI  
 Area Type: Counties and equivalents  
 State/Region/Division: Wisconsin  
 Measure: employment



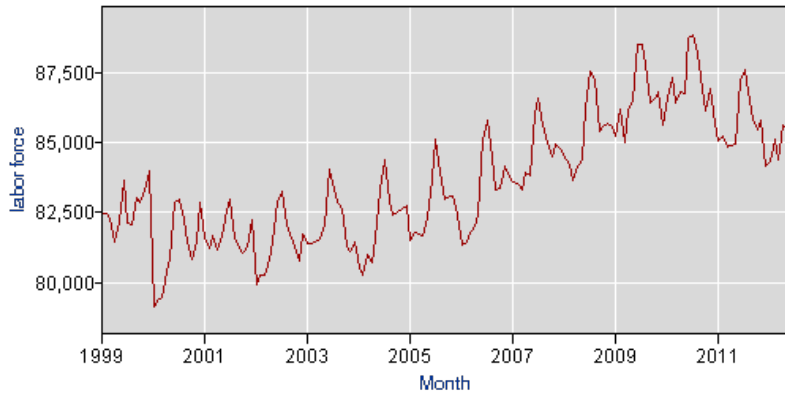
Download: .xls

Year	Jan	Feb	Mar	Apr	May	Jun	Jul	Aug	Sep	Oct	Nov	Dec	Annual
1999	79320	79362	79393	78992	79738	80640	78472	79576	80648	80730	81011	81683	79964
2000	75888	75619	75916	77178	77467	79720	78892	78976	78633	78666	78795	79345	77925
2001	77146	77065	77108	77118	77470	78518	78647	77573	77521	77207	77387	77469	77519
2002	75133	75319	75064	75859	76380	77904	77742	77587	77316	76861	76500	76608	76523
2003	76199	75994	75752	76224	76668	78432	78369	77777	77695	76822	76664	76921	76960
2004	75358	75192	75594	76068	76882	78390	78727	78545	78100	78294	78124	78142	77285
2005	76253	76259	76396	77044	77627	78833	79756	79647	78713	78970	78705	78206	78034
2006	76740	76723	76912	77690	78409	80247	80513	79866	79372	79713	79604	79690	78790
2007	78837(H)	78476(H)	78797(H)	79357(H)	79854(H)	81383(H)	82216(H)	81420(H)	81174(H)	80936(H)	81296(H)	80986(H)	80394(H)
2008	79940(H)	79468(H)	79448(H)	80304(H)	80485(H)	81887(H)	82804(H)	82301(H)	80965(H)	81019(H)	80469(H)	79711(H)	80733(H)
2009	77465(H)	76927(H)	76247(H)	77276(H)	77462(H)	78641(H)	78874(H)	78202(H)	77419(H)	77067(H)	76967(H)	76223(H)	77398(H)

<b>2010</b>	76130(E)	76058(E)	76177(E)	76972(E)	77530(E)	79274(E)	79310(E)	79237(E)	78697(E)	78115(E)	77912(E)	77725(E)	77761(E)
<b>2011</b>	76369(E)	76590(E)	76656(E)	77292(E)	77560(E)	79061(E)	79224(E)	78950(E)	78635(E)	78556(E)	78613(E)	77711(E)	77935(E)
<b>2012</b>	76917	77519	77358	78688	78821	80159(P)							

H : Reflects controlling to new statewide totals.  
 E : Reflects revised inputs, reestimation, and controlling to new statewide totals.  
 P : Preliminary.

**Series Id:** LAUCN55059006  
 Not Seasonally Adjusted  
**Area:** Kenosha County, WI  
**Area Type:** Counties and equivalents  
**State/Region/Division:** Wisconsin  
**Measure:** labor force

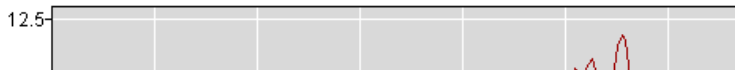


Download: [.xls](#)

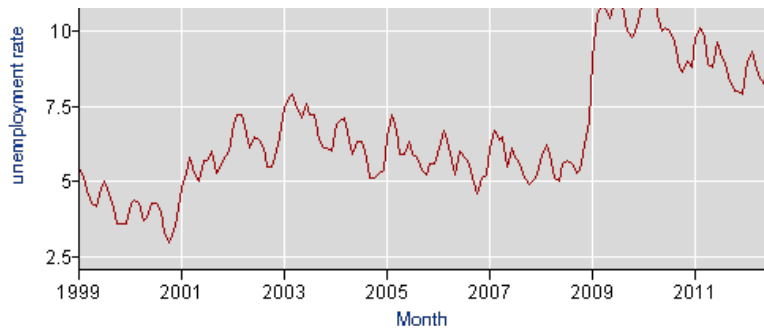
Year	Jan	Feb	Mar	Apr	May	Jun	Jul	Aug	Sep	Oct	Nov	Dec	Annual
<b>1999</b>	82441	82446	82286	81458	82201	83651	82098	82047	83002	82883	83321	83995	82653
<b>2000</b>	79161	79377	79457	80352	80895	82876	82958	82257	81437	80851	81510	82854	81166
<b>2001</b>	81591	81245	81673	81138	81647	82567	82973	81536	81220	81053	81282	82262	81682
<b>2002</b>	79940	80240	80274	80836	81438	82907	83247	82070	81756	81288	80783	81726	81376
<b>2003</b>	81394	81383	81448	81568	82086	84027	83553	82833	82603	81278	81102	81472	82063
<b>2004</b>	80529	80255	81008	80702	81628	83283	84387	82894	82407	82521	82606	82722	82079
<b>2005</b>	81513	81800	81706	81680	82306	83712	85121	83934	82967	83087	83073	82388	82774
<b>2006</b>	81323	81469	81759	81993	82435	85137	85806	84507	83299	83382	84139	83759	83251
<b>2007</b>	83599(H)	83547(H)	83315(H)	83951(H)	83807(H)	86040(H)	86566(H)	85633(H)	85008(H)	84480(H)	84940(H)	84779(H)	84638(H)
<b>2008</b>	84426(H)	84195(H)	83673(H)	84169(H)	84399(H)	86244(H)	87544(H)	87249(H)	85419(H)	85570(H)	85701(H)	85554(H)	85345(H)
<b>2009</b>	85199(H)	86182(H)	84988(H)	86210(H)	86540(H)	88514(H)	88506(H)	87791(H)	86419(H)	86575(H)	86781(H)	85638(H)	86612(H)
<b>2010</b>	86625(E)	87318(E)	86395(E)	86796(E)	86760(E)	88723(E)	88862(E)	88177(E)	86924(E)	86121(E)	86911(E)	85651(E)	87105(E)
<b>2011</b>	85081(E)	85199(E)	84856(E)	84880(E)	84963(E)	87193(E)	87622(E)	86827(E)	85833(E)	85460(E)	85767(E)	84128(E)	85651(E)
<b>2012</b>	84303	85117	84380	85636	85393	87687(P)							

H : Reflects controlling to new statewide totals.  
 E : Reflects revised inputs, reestimation, and controlling to new statewide totals.  
 P : Preliminary.

**Series Id:** LAUCN55101003  
 Not Seasonally Adjusted  
**Area:** Racine County, WI  
**Area Type:** Counties and equivalents  
**State/Region/Division:** Wisconsin  
**Measure:** unemployment rate



Bureau of Labor Statistics Data

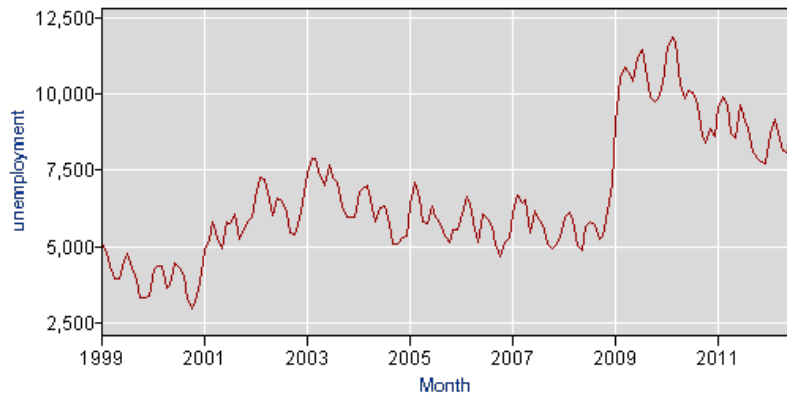


Download: .xls

Year	Jan	Feb	Mar	Apr	May	Jun	Jul	Aug	Sep	Oct	Nov	Dec	Annual
1999	5.5	5.1	4.7	4.3	4.2	4.8	5.0	4.6	4.1	3.6	3.6	3.6	4.4
2000	4.3	4.4	4.3	3.7	3.8	4.3	4.3	4.0	3.3	3.0	3.4	3.8	3.9
2001	4.8	5.3	5.8	5.3	5.0	5.7	5.7	6.0	5.3	5.5	5.8	6.0	5.5
2002	6.9	7.2	7.2	6.6	6.1	6.5	6.4	6.1	5.5	5.5	6.0	6.5	6.4
2003	7.5	7.8	7.9	7.4	7.1	7.6	7.2	7.2	6.4	6.1	6.1	6.0	7.0
2004	6.9	7.0	7.1	6.4	5.9	6.3	6.3	5.8	5.1	5.1	5.3	5.4	6.0
2005	6.5	7.2	6.7	5.9	5.9	6.3	5.9	5.8	5.4	5.2	5.6	5.6	6.0
2006	6.1	6.7	6.4	5.7	5.2	6.0	5.8	5.6	5.1	4.6	5.1	5.2	5.6
2007	6.1(H)	6.7(H)	6.4(H)	6.5(H)	5.5(H)	6.1(H)	5.8(H)	5.6(H)	5.1(H)	4.9(H)	5.0(H)	5.2(H)	5.7(H)
2008	5.9(H)	6.2(H)	5.9(H)	5.1(H)	5.0(H)	5.6(H)	5.7(H)	5.6(H)	5.3(H)	5.4(H)	6.2(H)	7.0(H)	5.7(H)
2009	9.1(H)	10.5(H)	10.9(H)	10.7(H)	10.4(H)	11.0(H)	11.2(H)	10.8(H)	10.0(H)	9.8(H)	10.0(H)	10.5(H)	10.4(H)
2010	11.6(E)	12.0(E)	11.8(E)	10.5(E)	10.0(E)	10.1(E)	10.0(E)	9.6(E)	8.8(E)	8.6(E)	9.0(E)	8.8(E)	10.1(E)
2011	9.8(E)	10.1(E)	9.8(E)	8.9(E)	8.8(E)	9.6(E)	9.1(E)	8.9(E)	8.3(E)	8.0(E)	8.0(E)	7.9(E)	8.9(E)
2012	9.0	9.3	8.9	8.4	8.2	9.2(P)							

H : Reflects controlling to new statewide totals.  
 E : Reflects revised inputs, reestimation, and controlling to new statewide totals.  
 P : Preliminary.

Series Id: LAUCN55101004  
 Not Seasonally Adjusted  
 Area: Racine County, WI  
 Area Type: Counties and equivalents  
 State/Region/Division: Wisconsin  
 Measure: unemployment



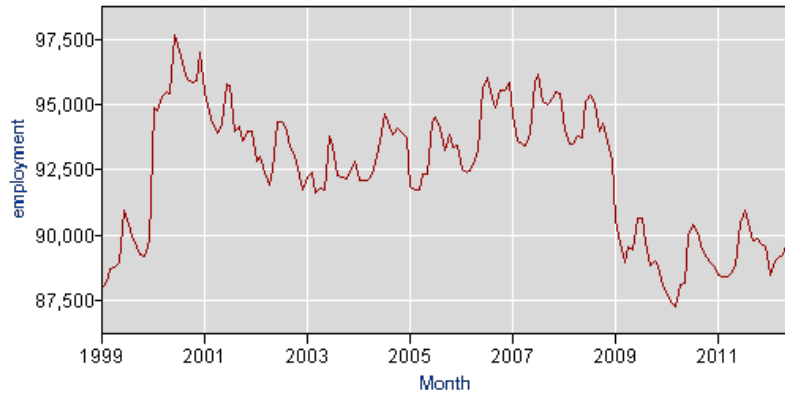
Download: .xls

Year	Jan	Feb	Mar	Apr	May	Jun	Jul	Aug	Sep	Oct	Nov	Dec	Annual
1999	5089	4763	4345	3950	3914	4562	4753	4326	3874	3302	3341	3391	4134

<b>2000</b>	4261	4370	4331	3636	3752	4437	4318	4039	3267	2978	3367	3825	3882
<b>2001</b>	4854	5249	5799	5279	4928	5786	5770	6043	5221	5473	5787	5974	5514
<b>2002</b>	6840	7251	7183	6527	6022	6591	6502	6107	5430	5376	5886	6421	6345
<b>2003</b>	7427	7861	7872	7306	6972	7679	7230	7107	6328	5967	5967	5946	6972
<b>2004</b>	6795	6900	6993	6275	5789	6272	6309	5747	5078	5073	5260	5353	5987
<b>2005</b>	6377	7087	6604	5787	5769	6336	5952	5742	5324	5129	5554	5521	5932
<b>2006</b>	6042	6655	6357	5566	5142	6069	5888	5672	5070	4642	5144	5298	5629
<b>2007</b>	6105(H)	6685(H)	6433(H)	6506(H)	5436(H)	6177(H)	5899(H)	5687(H)	5081(H)	4897(H)	5001(H)	5271(H)	5765(H)
<b>2008</b>	5944(H)	6137(H)	5847(H)	5018(H)	4888(H)	5670(H)	5804(H)	5686(H)	5223(H)	5338(H)	6142(H)	7031(H)	5727(H)
<b>2009</b>	9084(H)	10535(H)	10874(H)	10737(H)	10403(H)	11220(H)	11469(H)	10828(H)	9884(H)	9723(H)	9853(H)	10350(H)	10413(H)
<b>2010</b>	11558(E)	11893(E)	11696(E)	10297(E)	9826(E)	10123(E)	10029(E)	9623(E)	8607(E)	8384(E)	8847(E)	8602(E)	9957(E)
<b>2011</b>	9591(E)	9893(E)	9615(E)	8704(E)	8567(E)	9652(E)	9109(E)	8865(E)	8101(E)	7857(E)	7751(E)	7697(E)	8784(E)
<b>2012</b>	8719	9166	8708	8137	8067	9222(P)							

H : Reflects controlling to new statewide totals.  
 E : Reflects revised inputs, reestimation, and controlling to new statewide totals.  
 P : Preliminary.

**Series Id:** LAUCN55101005  
 Not Seasonally Adjusted  
**Area:** Racine County, WI  
**Area Type:** Counties and equivalents  
**State/Region/Division:** Wisconsin  
**Measure:** employment



Download: [.xls](#)

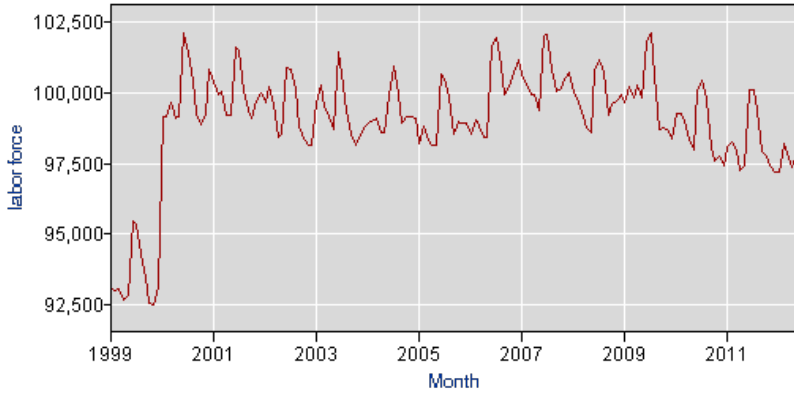
Year	Jan	Feb	Mar	Apr	May	Jun	Jul	Aug	Sep	Oct	Nov	Dec	Annual
<b>1999</b>	87971	88251	88708	88761	88959	90938	90589	89996	89570	89246	89206	89815	89334
<b>2000</b>	94864	94785	95337	95486	95404	97696	97077	96317	95979	95876	95897	96988	95976
<b>2001</b>	95503	94703	94259	93917	94283	95794	95730	94003	94169	93611	93946	93995	94493
<b>2002</b>	92809	92985	92413	91901	92505	94310	94329	93974	93388	93013	92253	91749	92969
<b>2003</b>	92234	92397	91627	91820	91733	93776	93425	92255	92192	92170	92475	92802	92409
<b>2004</b>	92118	92098	92104	92339	92791	93624	94625	94167	93843	94089	93905	93725	93286
<b>2005</b>	91851	91741	91714	92369	92363	94347	94550	94067	93233	93842	93383	93422	93074
<b>2006</b>	92502	92397	92484	92869	93279	95588	96053	95276	94858	95542	95554	95841	94354
<b>2007</b>	94563(H)	93591(H)	93485(H)	93407(H)	93924(H)	95824(H)	96136(H)	95118(H)	94975(H)	95232(H)	95512(H)	95456(H)	94769(H)
<b>2008</b>	94060(H)	93500(H)	93495(H)	93767(H)	93705(H)	95114(H)	95353(H)	95005(H)	93985(H)	94266(H)	93547(H)	92897(H)	94058(H)
<b>2009</b>	90574(H)	89674(H)	88967(H)	89549(H)	89426(H)	90627(H)	90646(H)	89750(H)	88819(H)	89032(H)	88834(H)	88027(H)	89494(H)
<b>2010</b>	87700(E)	87361(E)	87289(E)	88084(E)	88145(E)	89992(E)	90397(E)	90129(E)	89408(E)	89198(E)	88929(E)	88800(E)	88786(E)
<b>2011</b>	88475(E)	88388(E)	88380(E)	88560(E)	88862(E)	90473(E)	90969(E)	90484(E)	89809(E)	89874(E)	89672(E)	89532(E)	89457(E)
<b>2012</b>	88468	89022	89156	89226	89824	90898(P)							

H : Reflects controlling to new statewide totals.  
 E : Reflects revised inputs, reestimation, and controlling to new statewide totals.  
 P : Preliminary.

**Series Id:** LAUCN55101006

Not Seasonally Adjusted

**Area:** Racine County, WI  
**Area Type:** Counties and equivalents  
**State/Region/Division:** Wisconsin  
**Measure:** labor force

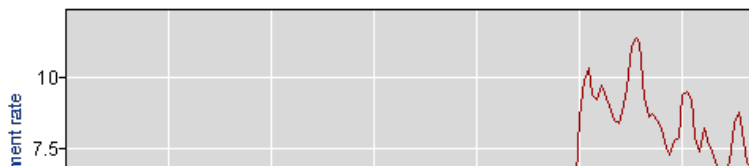


Download: [.xls](#)

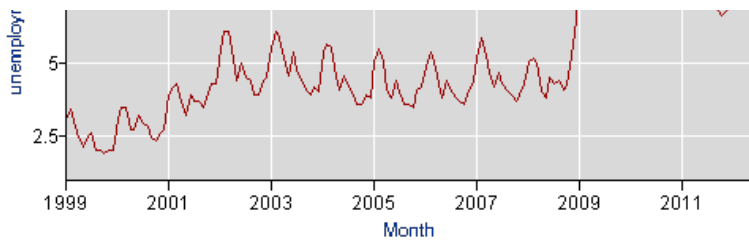
Year	Jan	Feb	Mar	Apr	May	Jun	Jul	Aug	Sep	Oct	Nov	Dec	Annual
1999	93060	93014	93053	92711	92873	95500	95342	94322	93444	92548	92547	93206	93468
2000	99125	99155	99668	99122	99156	102133	101395	100356	99246	98854	99264	100813	99858
2001	100357	99952	100058	99196	99211	101580	101500	100046	99390	99084	99733	99969	100007
2002	99649	100236	99596	98428	98527	100901	100831	100081	98818	98389	98139	98170	99314
2003	99661	100258	99499	99126	98705	101455	100655	99362	98520	98137	98442	98748	99381
2004	98913	98998	99097	98614	98580	99896	100934	99914	98921	99162	99165	99078	99273
2005	98228	98828	98318	98156	98132	100683	100502	99809	98557	98971	98937	98943	99006
2006	98544	99052	98841	98435	98421	101657	101941	100948	99928	100184	100698	101139	99983
2007	100668(H)	100276(H)	99918(H)	99913(H)	99360(H)	102001(H)	102035(H)	100805(H)	100056(H)	100129(H)	100513(H)	100727(H)	100534(H)
2008	100004(H)	99637(H)	99342(H)	98785(H)	98593(H)	100784(H)	101157(H)	100691(H)	99208(H)	99604(H)	99689(H)	99928(H)	99785(H)
2009	99658(H)	100209(H)	99841(H)	100286(H)	99829(H)	101847(H)	102115(H)	100578(H)	98703(H)	98755(H)	98687(H)	98377(H)	99907(H)
2010	99258(E)	99254(E)	98985(E)	98381(E)	97971(E)	100115(E)	100426(E)	99752(E)	98015(E)	97582(E)	97776(E)	97402(E)	98743(E)
2011	98066(E)	98281(E)	97995(E)	97264(E)	97429(E)	100125(E)	100078(E)	99349(E)	97910(E)	97731(E)	97423(E)	97229(E)	98241(E)
2012	97187	98188	97864	97363	97891	100120(P)							

H : Reflects controlling to new statewide totals.  
 E : Reflects revised inputs, reestimation, and controlling to new statewide totals.  
 P : Preliminary.

**Series Id:** LAUPA55060003  
 Not Seasonally Adjusted  
**Area:** Walworth County, WI  
**Area Type:** Counties and equivalents  
**State/Region/Division:** Wisconsin  
**Measure:** unemployment rate



Bureau of Labor Statistics Data

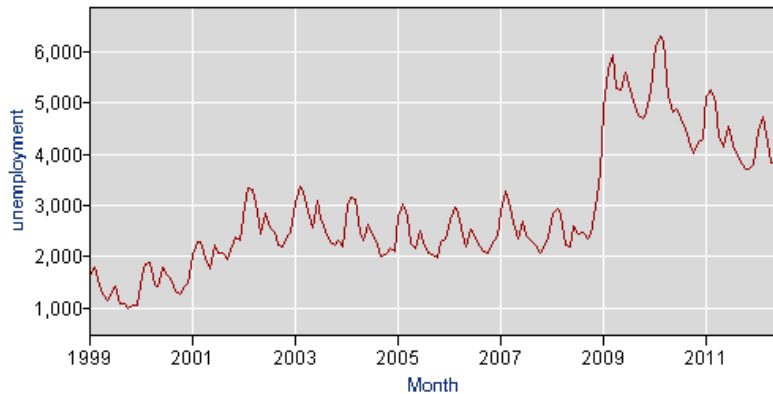


Download: .xls

Year	Jan	Feb	Mar	Apr	May	Jun	Jul	Aug	Sep	Oct	Nov	Dec	Annual
1999	3.1	3.4	3.0	2.4	2.1	2.5	2.6	2.0	2.0	1.9	2.0	2.0	2.4
2000	3.1	3.5	3.5	2.7	2.7	3.2	2.9	2.8	2.4	2.3	2.6	2.7	2.9
2001	3.9	4.2	4.3	3.7	3.2	3.9	3.7	3.7	3.5	3.8	4.3	4.3	3.9
2002	5.5	6.1	6.1	5.2	4.4	5.0	4.5	4.4	3.9	3.9	4.4	4.5	4.8
2003	5.6	6.1	5.9	5.2	4.6	5.4	4.8	4.4	4.1	3.9	4.2	4.0	4.8
2004	5.4	5.7	5.6	4.5	4.1	4.6	4.2	3.9	3.6	3.6	3.9	3.8	4.4
2005	5.1	5.5	5.1	4.1	3.8	4.4	4.0	3.6	3.6	3.5	4.1	4.2	4.2
2006	4.9	5.4	5.1	4.3	3.8	4.4	4.0	3.8	3.7	3.6	4.1	4.4	4.3
2007	5.2(H)	5.9(H)	5.3(H)	4.7(H)	4.2(H)	4.7(H)	4.3(H)	4.1(H)	3.9(H)	3.7(H)	3.9(H)	4.3(H)	4.5(H)
2008	5.1(H)	5.2(H)	5.0(H)	4.0(H)	3.8(H)	4.5(H)	4.3(H)	4.4(H)	4.1(H)	4.3(H)	5.3(H)	6.5(H)	4.7(H)
2009	8.6(H)	9.9(H)	10.3(H)	9.4(H)	9.2(H)	9.7(H)	9.3(H)	9.0(H)	8.5(H)	8.4(H)	8.8(H)	9.6(H)	9.2(H)
2010	11.1(E)	11.4(E)	11.2(E)	9.3(E)	8.6(E)	8.7(E)	8.5(E)	8.2(E)	7.5(E)	7.3(E)	7.8(E)	7.9(E)	8.9(E)
2011	9.4(E)	9.5(E)	9.2(E)	7.9(E)	7.4(E)	8.2(E)	7.6(E)	7.4(E)	6.9(E)	6.7(E)	6.8(E)	7.0(E)	7.8(E)
2012	8.4	8.8	8.1	7.0	6.9	7.8(P)							

H : Reflects controlling to new statewide totals.  
 E : Reflects revised inputs, reestimation, and controlling to new statewide totals.  
 P : Preliminary.

Series Id: LAUPA55060004  
 Not Seasonally Adjusted  
 Area: Walworth County, WI  
 Area Type: Counties and equivalents  
 State/Region/Division: Wisconsin  
 Measure: unemployment



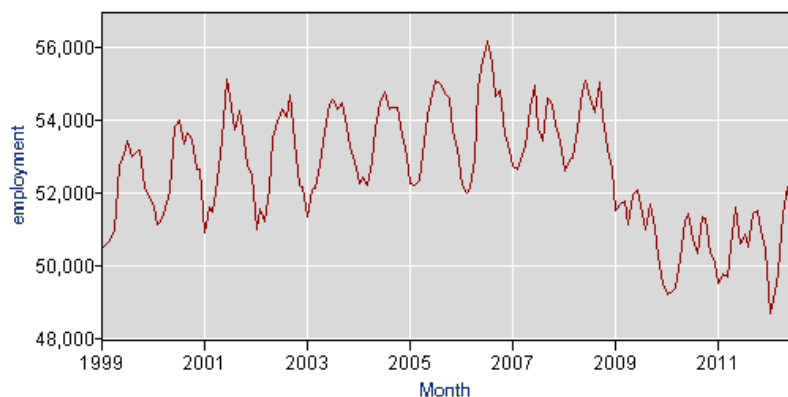
Download: .xls

Year	Jan	Feb	Mar	Apr	May	Jun	Jul	Aug	Sep	Oct	Nov	Dec	Annual
1999	1625	1792	1550	1269	1135	1342	1427	1077	1079	1003	1061	1043	1284
2000	1625	1839	1879	1460	1422	1797	1625	1525	1336	1254	1408	1479	1554
2001	2040	2280	2284	1984	1754	2234	2075	2074	1957	2134	2370	2330	2126
2002	2990	3332	3307	2885	2456	2849	2551	2485	2219	2190	2397	2460	2677

<b>2003</b>	3049	3361	3280	2879	2577	3084	2744	2518	2302	2212	2308	2197	2709
<b>2004</b>	2986	3148	3123	2478	2316	2638	2401	2230	2006	2035	2150	2109	2468
<b>2005</b>	2798	3040	2786	2272	2165	2493	2283	2064	2045	1975	2300	2354	2381
<b>2006</b>	2707	2983	2831	2398	2194	2534	2339	2181	2091	2072	2274	2422	2419
<b>2007</b>	2910(H)	3286(H)	2981(H)	2654(H)	2354(H)	2691(H)	2403(H)	2307(H)	2219(H)	2086(H)	2185(H)	2375(H)	2538(H)
<b>2008</b>	2832(H)	2928(H)	2802(H)	2226(H)	2186(H)	2604(H)	2427(H)	2484(H)	2363(H)	2447(H)	2964(H)	3659(H)	2660(H)
<b>2009</b>	4876(H)	5673(H)	5945(H)	5281(H)	5267(H)	5599(H)	5263(H)	5032(H)	4774(H)	4703(H)	4828(H)	5268(H)	5209(H)
<b>2010</b>	6123(E)	6325(E)	6219(E)	5120(E)	4812(E)	4891(E)	4690(E)	4494(E)	4167(E)	4021(E)	4249(E)	4288(E)	4950(E)
<b>2011</b>	5125(E)	5253(E)	5022(E)	4322(E)	4152(E)	4533(E)	4176(E)	4035(E)	3833(E)	3701(E)	3718(E)	3792(E)	4305(E)
<b>2012</b>	4460	4739	4400	3844	3849	4341(P)							

H : Reflects controlling to new statewide totals.  
 E : Reflects revised inputs, reestimation, and controlling to new statewide totals.  
 P : Preliminary.

**Series Id:** LAUPA55060005  
 Not Seasonally Adjusted  
**Area:** Walworth County, WI  
**Area Type:** Counties and equivalents  
**State/Region/Division:** Wisconsin  
**Measure:** employment



Download: [.xls](#)

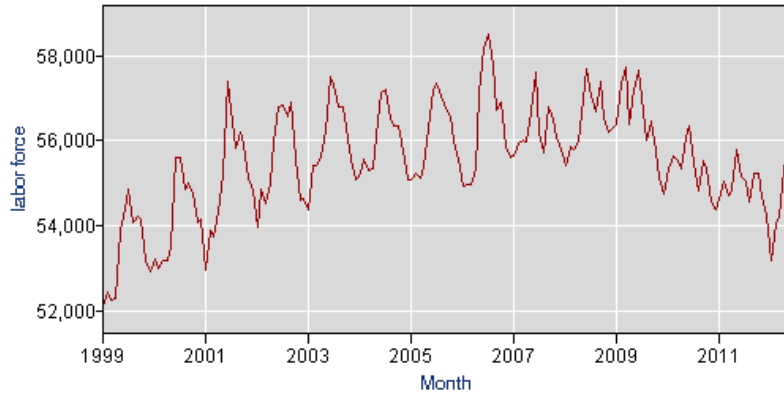
Year	Jan	Feb	Mar	Apr	May	Jun	Jul	Aug	Sep	Oct	Nov	Dec	Annual
<b>1999</b>	50490	50624	50695	51004	52748	53067	53430	52987	53126	53148	52129	51874	52110
<b>2000</b>	51591	51144	51288	51715	52088	53814	53993	53331	53652	53494	52650	52663	52619
<b>2001</b>	50927	51602	51452	52343	53492	55143	54633	53743	54254	53753	52765	52486	53049
<b>2002</b>	50982	51543	51200	52124	53511	53943	54295	54103	54682	53371	52214	52186	52846
<b>2003</b>	51337	52073	52141	52762	53676	54416	54573	54284	54483	53832	53261	52876	53310
<b>2004</b>	52244	52431	52199	52871	53796	54483	54794	54279	54357	54329	53613	52980	53531
<b>2005</b>	52270	52204	52342	53094	54146	54724	55084	55003	54718	54594	53691	53212	53757
<b>2006</b>	52231	51985	52148	52929	54926	55636	56192	55573	54631	54824	53600	53180	53988
<b>2007</b>	52741(H)	52669(H)	53035(H)	53308(H)	54329(H)	54936(H)	53790(H)	53417(H)	54587(H)	54411(H)	53886(H)	53422(H)	53711(H)
<b>2008</b>	52601(H)	52929(H)	52970(H)	53760(H)	54787(H)	55085(H)	54625(H)	54197(H)	55049(H)	54080(H)	53224(H)	52648(H)	53830(H)
<b>2009</b>	51529(H)	51701(H)	51772(H)	51121(H)	51957(H)	52061(H)	51410(H)	50976(H)	51703(H)	51052(H)	50276(H)	49481(H)	51253(H)
<b>2010</b>	49209(E)	49311(E)	49364(E)	50207(E)	51277(E)	51443(E)	50754(E)	50326(E)	51364(E)	51313(E)	50323(E)	50084(E)	50415(E)
<b>2011</b>	49517(E)	49786(E)	49703(E)	50527(E)	51625(E)	50623(E)	50850(E)	50512(E)	51412(E)	51535(E)	50948(E)	50443(E)	50623(E)
<b>2012</b>	48710	49304	49806	51450	52162	51173(P)							

H : Reflects controlling to new statewide totals.  
 E : Reflects revised inputs, reestimation, and controlling to new statewide totals.  
 P : Preliminary.

**Series Id:** LAUPA55060006  
 Not Seasonally Adjusted  
**Area:** Walworth County, WI  
**Area Type:** Counties and equivalents  
**State/Region/Division:** Wisconsin



State/Region/Division: WISCONSIN  
 Measure: labor force

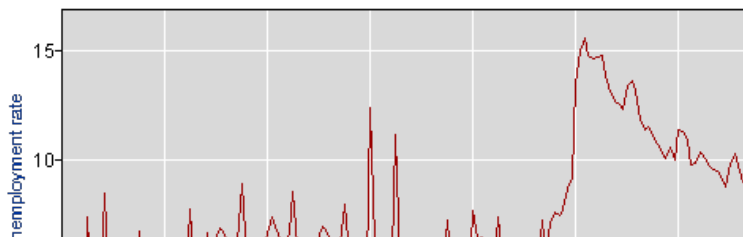


Download: .xls

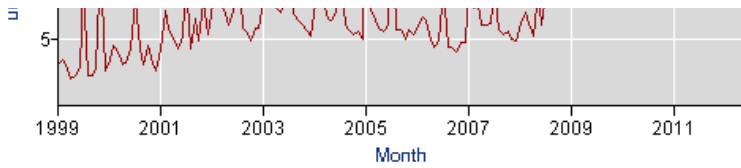
Year	Jan	Feb	Mar	Apr	May	Jun	Jul	Aug	Sep	Oct	Nov	Dec	Annual
1999	52115	52416	52245	52273	53883	54409	54857	54064	54205	54151	53190	52917	53394
2000	53216	52983	53167	53175	53510	55611	55618	54856	54988	54748	54058	54142	54173
2001	52967	53882	53736	54327	55246	57377	56708	55817	56211	55887	55135	54816	55175
2002	53972	54875	54507	55009	55967	56792	56846	56588	56901	55561	54611	54646	55523
2003	54386	55434	55421	55641	56253	57500	57317	56802	56785	56044	55569	55073	56019
2004	55230	55579	55322	55349	56112	57121	57195	56509	56363	56364	55763	55089	55999
2005	55068	55244	55128	55366	56311	57217	57367	57067	56763	56569	55991	55566	56138
2006	54938	54968	54979	55327	57120	58170	58531	57754	56722	56896	55874	55602	56407
2007	55651(H)	55955(H)	56016(H)	55962(H)	56683(H)	57627(H)	56193(H)	55724(H)	56806(H)	56497(H)	56071(H)	55797(H)	56249(H)
2008	55433(H)	55857(H)	55772(H)	55986(H)	56973(H)	57689(H)	57052(H)	56681(H)	57412(H)	56527(H)	56188(H)	56307(H)	56490(H)
2009	56405(H)	57374(H)	57717(H)	56402(H)	57224(H)	57660(H)	56673(H)	56008(H)	56477(H)	55755(H)	55104(H)	54749(H)	56462(H)
2010	55332(E)	55636(E)	55583(E)	55327(E)	56089(E)	56334(E)	55444(E)	54820(E)	55531(E)	55334(E)	54572(E)	54372(E)	55365(E)
2011	54642(E)	55039(E)	54725(E)	54849(E)	55777(E)	55156(E)	55026(E)	54547(E)	55245(E)	55236(E)	54666(E)	54235(E)	54928(E)
2012	53170	54043	54206	55294	56011	55514(P)							

H : Reflects controlling to new statewide totals.  
 E : Reflects revised inputs, reestimation, and controlling to new statewide totals.  
 P : Preliminary.

Series Id: LAUPA55140003  
 Not Seasonally Adjusted  
 Area: Janesville city, WI  
 Area Type: Cities and towns above 25,000 population  
 State/Region/Division: Wisconsin  
 Measure: unemployment rate



Bureau of Labor Statistics Data

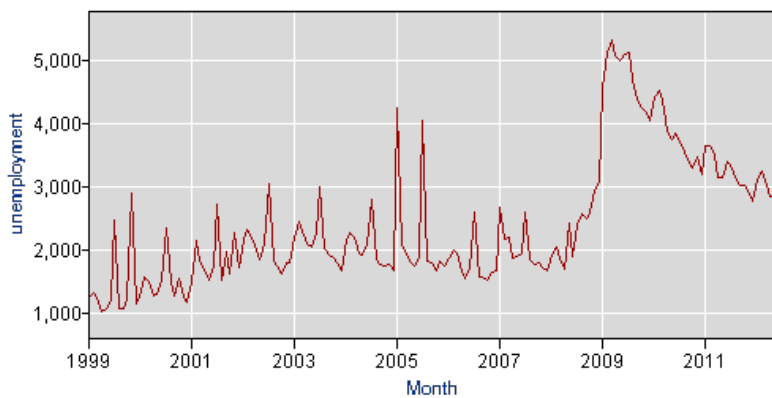


Download: [.xls](#)

Year	Jan	Feb	Mar	Apr	May	Jun	Jul	Aug	Sep	Oct	Nov	Dec	Annual
1999	3.8	4.0	3.8	3.2	3.3	3.7	7.4	3.3	3.3	3.7	8.5	3.5	4.3
2000	4.0	4.7	4.4	3.8	3.9	4.5	6.8	4.5	3.8	4.7	3.8	3.5	4.4
2001	4.5	6.3	5.4	5.0	4.5	5.1	7.8	4.5	5.9	4.9	6.7	5.2	5.5
2002	6.6	6.9	6.6	6.1	5.6	6.3	8.9	5.5	5.3	4.9	5.5	5.5	6.1
2003	6.7	7.4	7.0	6.4	6.2	6.7	8.6	6.1	5.8	5.6	5.4	5.1	6.4
2004	6.6	7.0	6.7	5.9	5.8	6.2	8.0	5.6	5.4	5.2	5.3	5.0	6.1
2005	12.4	6.3	5.8	5.5	5.3	5.6	11.2	5.4	5.4	5.0	5.4	5.2	6.6
2006	5.6	6.0	5.8	4.9	4.6	4.9	7.3	4.6	4.6	4.4	4.8	4.8	5.2
2007	7.7(H)	6.4(H)	6.5(H)	5.6(H)	5.6(H)	5.7(H)	7.4(H)	5.4(H)	5.2(H)	5.3(H)	5.0(H)	4.9(H)	5.9(H)
2008	5.7(H)	6.2(H)	5.7(H)	5.1(H)	7.3(H)	5.6(H)	7.1(H)	7.6(H)	7.5(H)	7.8(H)	8.7(H)	9.2(H)	7.0(H)
2009	13.5(H)	15.0(H)	15.6(H)	14.8(H)	14.6(H)	14.7(H)	14.8(H)	13.8(H)	13.1(H)	12.7(H)	12.6(H)	12.3(H)	14.0(H)
2010	13.4(E)	13.6(E)	13.2(E)	11.8(E)	11.4(E)	11.5(E)	11.1(E)	10.7(E)	10.3(E)	10.1(E)	10.6(E)	10.0(E)	11.5(E)
2011	11.4(E)	11.3(E)	10.9(E)	9.8(E)	9.9(E)	10.4(E)	10.1(E)	9.8(E)	9.6(E)	9.5(E)	9.3(E)	8.8(E)	10.1(E)
2012	9.9	10.3	9.7	9.0	8.9	9.9(P)							

H : Reflects controlling to new statewide totals.  
 E : Reflects revised inputs, reestimation, and controlling to new statewide totals.  
 P : Preliminary.

Series Id: LAUPA55140004  
 Not Seasonally Adjusted  
 Area: Janesville city, WI  
 Area Type: Cities and towns above 25,000 population  
 State/Region/Division: Wisconsin  
 Measure: unemployment



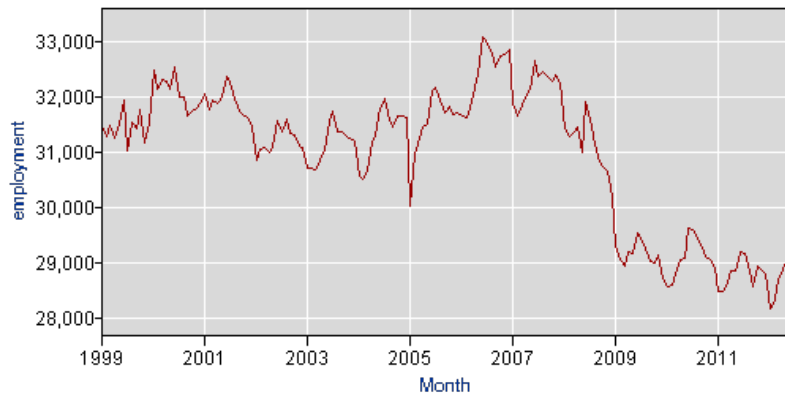
Download: [.xls](#)

Year	Jan	Feb	Mar	Apr	May	Jun	Jul	Aug	Sep	Oct	Nov	Dec	Annual
1999	1249	1312	1257	1035	1083	1212	2475	1085	1084	1211	2895	1155	1421
2000	1352	1584	1496	1285	1290	1526	2347	1498	1262	1552	1253	1163	1467
2001	1504	2137	1820	1680	1523	1752	2719	1522	1974	1626	2260	1725	1854
2002	2174	2312	2207	2003	1851	2106	3051	1833	1751	1629	1796	1800	2043
2003	2205	2438	2308	2095	2046	2263	2995	2024	1932	1870	1786	1664	2136
2004	2173	2278	2209	1943	1913	2090	2799	1859	1779	1742	1782	1680	2021
2005	4239	2078	1928	1823	1756	1890	4051	1824	1807	1675	1826	1742	2220

<b>2006</b>	1879	2005	1951	1658	1548	1717	2596	1581	1571	1514	1641	1663	1777
<b>2007</b>	2667(H)	2176(H)	2202(H)	1881(H)	1891(H)	1958(H)	2596(H)	1841(H)	1780(H)	1803(H)	1719(H)	1671(H)	2015(H)
<b>2008</b>	1915(H)	2055(H)	1883(H)	1698(H)	2429(H)	1891(H)	2404(H)	2562(H)	2495(H)	2594(H)	2938(H)	3076(H)	2328(H)
<b>2009</b>	4582(H)	5128(H)	5332(H)	5071(H)	4984(H)	5099(H)	5126(H)	4687(H)	4375(H)	4235(H)	4194(H)	4044(H)	4738(H)
<b>2010</b>	4423(E)	4517(E)	4363(E)	3870(E)	3747(E)	3839(E)	3690(E)	3538(E)	3375(E)	3287(E)	3461(E)	3201(E)	3776(E)
<b>2011</b>	3658(E)	3640(E)	3499(E)	3150(E)	3153(E)	3389(E)	3288(E)	3148(E)	3026(E)	3028(E)	2957(E)	2771(E)	3226(E)
<b>2012</b>	3109	3242	3099	2847	2835	3212(P)							

H : Reflects controlling to new statewide totals.  
 E : Reflects revised inputs, reestimation, and controlling to new statewide totals.  
 P : Preliminary.

**Series Id:** LAUPA55140005  
 Not Seasonally Adjusted  
**Area:** Janesville city, WI  
**Area Type:** Cities and towns above 25,000 population  
**State/Region/Division:** Wisconsin  
**Measure:** employment

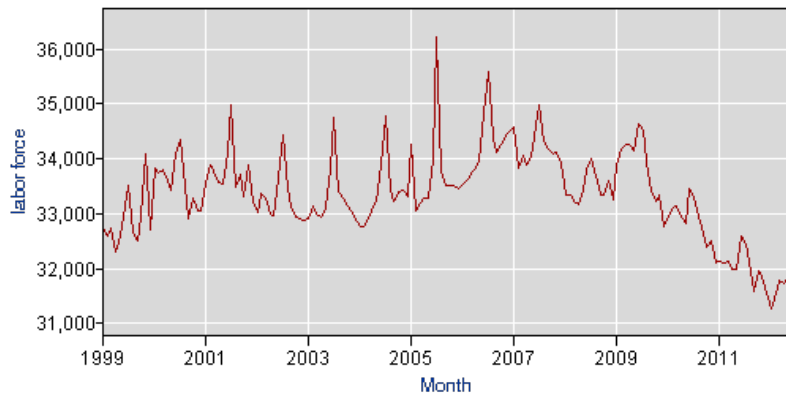


Download: [.xls](#)

Year	Jan	Feb	Mar	Apr	May	Jun	Jul	Aug	Sep	Oct	Nov	Dec	Annual
<b>1999</b>	31478	31284	31477	31266	31521	31932	31026	31558	31433	31766	31184	31544	31456
<b>2000</b>	32479	32146	32305	32303	32148	32553	32012	32013	31647	31736	31789	31896	32086
<b>2001</b>	32069	31760	31938	31893	32009	32371	32262	31967	31753	31673	31623	31457	31898
<b>2002</b>	30861	31044	31078	30990	31121	31559	31378	31615	31350	31312	31107	31077	31208
<b>2003</b>	30704	30707	30684	30849	31058	31578	31742	31377	31359	31281	31254	31210	31150
<b>2004</b>	30581	30497	30686	31196	31322	31801	31972	31570	31451	31666	31655	31619	31335
<b>2005</b>	30010	30984	31263	31472	31527	32110	32180	31958	31706	31843	31682	31713	31537
<b>2006</b>	31652	31623	31800	32183	32434	33107	32992	32780	32540	32750	32780	32854	32458
<b>2007</b>	31902(H)	31659(H)	31865(H)	32000(H)	32140(H)	32650(H)	32387(H)	32475(H)	32384(H)	32297(H)	32407(H)	32249(H)	32201(H)
<b>2008</b>	31437(H)	31274(H)	31351(H)	31456(H)	30996(H)	31911(H)	31593(H)	31131(H)	30836(H)	30735(H)	30658(H)	30188(H)	31131(H)
<b>2009</b>	29314(H)	29041(H)	28925(H)	29194(H)	29165(H)	29521(H)	29406(H)	29251(H)	29030(H)	29002(H)	29136(H)	28709(H)	29141(H)
<b>2010</b>	28553(E)	28583(E)	28775(E)	29056(E)	29077(E)	29612(E)	29592(E)	29409(E)	29266(E)	29101(E)	29056(E)	28898(E)	29082(E)
<b>2011</b>	28482(E)	28469(E)	28633(E)	28849(E)	28842(E)	29202(E)	29152(E)	28954(E)	28562(E)	28925(E)	28884(E)	28781(E)	28811(E)
<b>2012</b>	28172	28318	28700	28880	29062	29096(P)							

H : Reflects controlling to new statewide totals.  
 E : Reflects revised inputs, reestimation, and controlling to new statewide totals.  
 P : Preliminary.

**Series Id:** LAUPA55140006  
 Not Seasonally Adjusted  
**Area:** Janesville city, WI  
**Area Type:** Cities and towns above 25,000 population  
**State/Region/Division:** Wisconsin  
**Measure:** labor force



Download: .xls

Year	Jan	Feb	Mar	Apr	May	Jun	Jul	Aug	Sep	Oct	Nov	Dec	Annual
1999	32727	32596	32734	32301	32604	33144	33501	32643	32517	32977	34079	32699	32877
2000	33831	33730	33801	33588	33438	34079	34359	33511	32909	33288	33042	33059	33553
2001	33573	33897	33758	33573	33532	34123	34981	33489	33727	33299	33883	33182	33752
2002	33035	33356	33285	32993	32972	33665	34429	33448	33101	32941	32903	32877	33251
2003	32909	33145	32992	32944	33104	33841	34737	33401	33291	33151	33040	32874	33286
2004	32754	32775	32895	33139	33235	33891	34771	33429	33230	33408	33437	33299	33356
2005	34249	33062	33191	33295	33283	34000	36231	33782	33513	33518	33508	33455	33757
2006	33531	33628	33751	33841	33982	34824	35588	34361	34111	34264	34421	34517	34235
2007	34569(H)	33835(H)	34067(H)	33881(H)	34031(H)	34608(H)	34983(H)	34316(H)	34164(H)	34100(H)	34126(H)	33920(H)	34216(H)
2008	33352(H)	33329(H)	33234(H)	33154(H)	33425(H)	33802(H)	33997(H)	33693(H)	33331(H)	33329(H)	33596(H)	33264(H)	33459(H)
2009	33896(H)	34169(H)	34257(H)	34265(H)	34149(H)	34620(H)	34532(H)	33938(H)	33405(H)	33237(H)	33330(H)	32753(H)	33879(H)
2010	32976(E)	33100(E)	33138(E)	32926(E)	32824(E)	33451(E)	33282(E)	32947(E)	32641(E)	32388(E)	32517(E)	32099(E)	32858(E)
2011	32140(E)	32109(E)	32132(E)	31999(E)	31995(E)	32591(E)	32440(E)	32102(E)	31588(E)	31953(E)	31841(E)	31552(E)	32037(E)
2012	31281	31560	31799	31727	31897	32308(P)							

H : Reflects controlling to new statewide totals.  
 E : Reflects revised inputs, reestimation, and controlling to new statewide totals.  
 P : Preliminary.

**TOOLS**

- Areas at a Glance
- Industries at a Glance
- Economic Releases
- Databases & Tables
- Maps

**CALCULATORS**

- Inflation
- Location Quotient
- Injury And Illness

**HELP**

- Help & Tutorials
- FAQs
- Glossary
- About BLS
- Contact Us

**INFO**

- What's New
- Careers @ BLS
- Find It! DOL
- Join our Mailing Lists
- Linking & Copyright Info

**RESOURCES**

- Inspector General (OIG)
- Budget and Performance
- No Fear Act
- USA.gov
- Benefits.gov
- Disability.gov

Freedom of Information Act | Privacy & Security Statement | Disclaimers | Customer Survey | Important Web Site Notices

U.S. Bureau of Labor Statistics | Postal Square Building, 2 Massachusetts Avenue, NE Washington, DC 20212-0001  
[www.bls.gov](http://www.bls.gov) | Telephone: 1-202-691-5200 | TDD: 1-800-877-8339 | [Contact Us](#)